

You Were Always You




BY STEVEN COMBS

ILLUSTRATED BY SOFIA ZINGALE







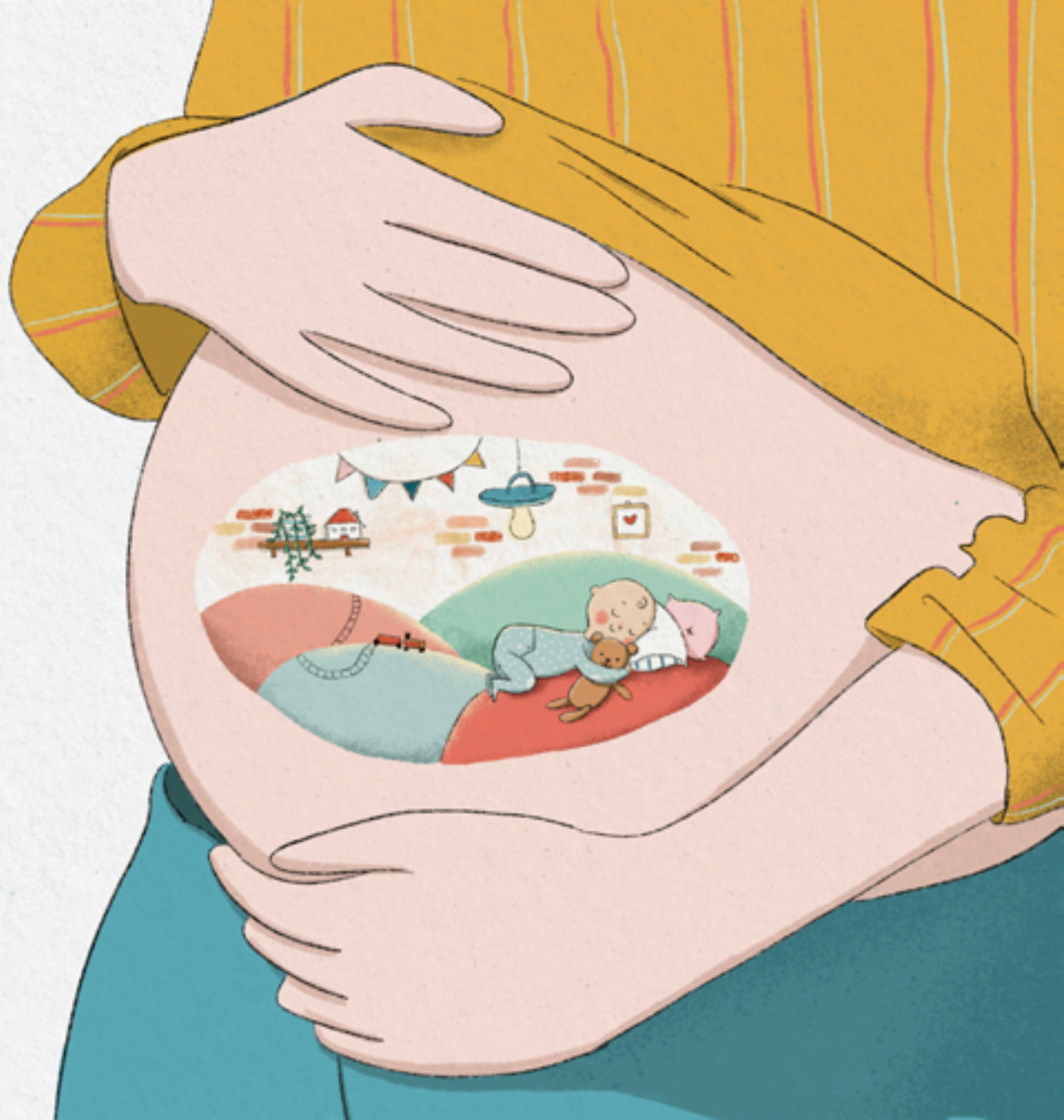
A large magnifying glass with a dark brown frame and handle is positioned on the right side of the page. The lens is focused on a large, pinkish-orange cell. Inside this cell are many smaller, similar cells. One of these smaller cells is a larger, darker orange circle with a simple smiley face. To the left of the magnifying glass, there are two more layers of these cells, one partially visible behind the magnifying glass's frame. The background is a light teal color. In the lower-left corner, there are several dandelion-like seed heads on thin green stems, some of which are blowing away. The bottom of the page is a dark teal color, suggesting a ground surface.

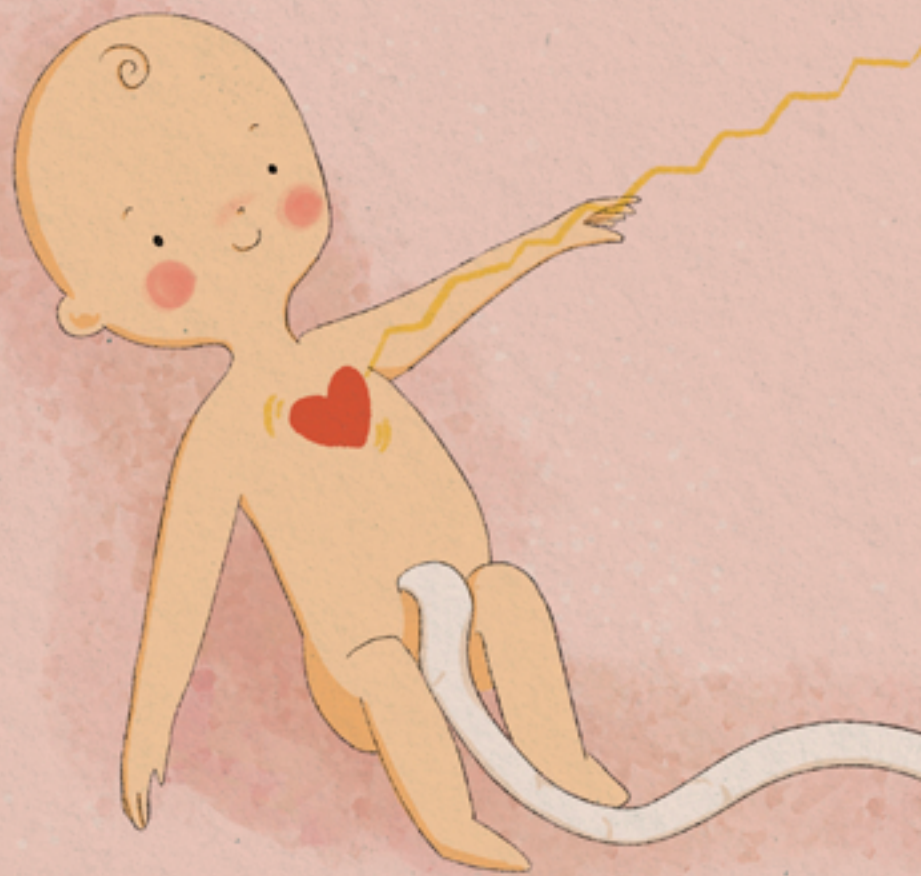
Before you were born
Or took your first breath,
Before you walked the earth
Or took your first step,

You went on a journey—
Incredible, indeed!
Much like a tall oak
Was once only a seed.

Your mother's womb
Was a sweet, special place
For you to grow up,
For you to be safe.

See, even in only
A handful of days
You grew from one cell to thousands!
A remarkable pace.







It was miraculous when
Your heart started to beat.
By only week five
You were the size of a seed!

You started to move
By just the eighth week.
Your body was growing,
Two hands and two feet!